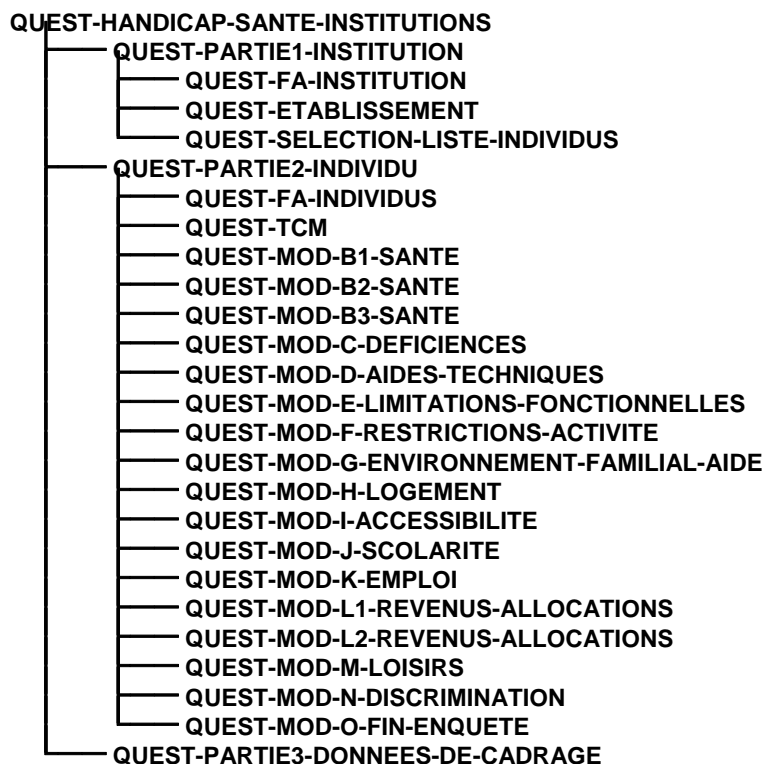


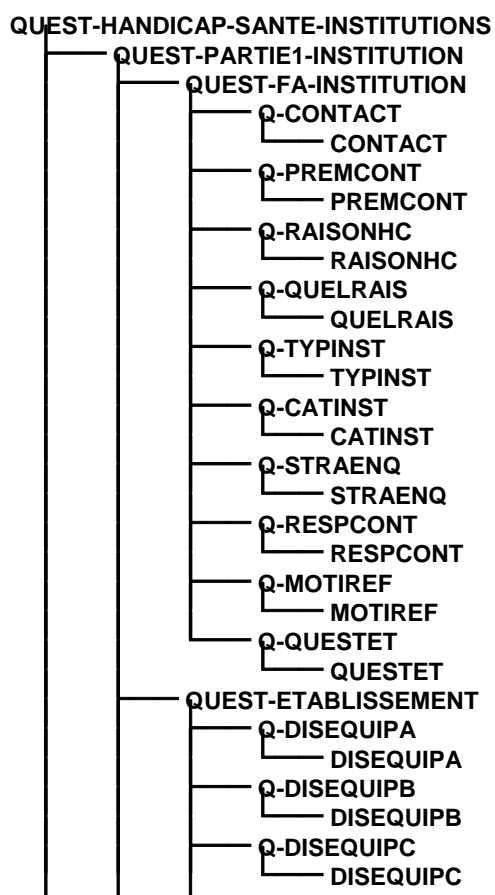
Liens en cascade à partir de QUEST-HANDICAP-SANTE-INSTITUTIONS

{ Base "HSI09" sur "DDS_DS_DS_DEMOGRAPHIE" (modèle "ENQUETE2002")
[le 18 octobre 2010 à 14:08:51] }

Arborescence simplifiée



Arborescence complète



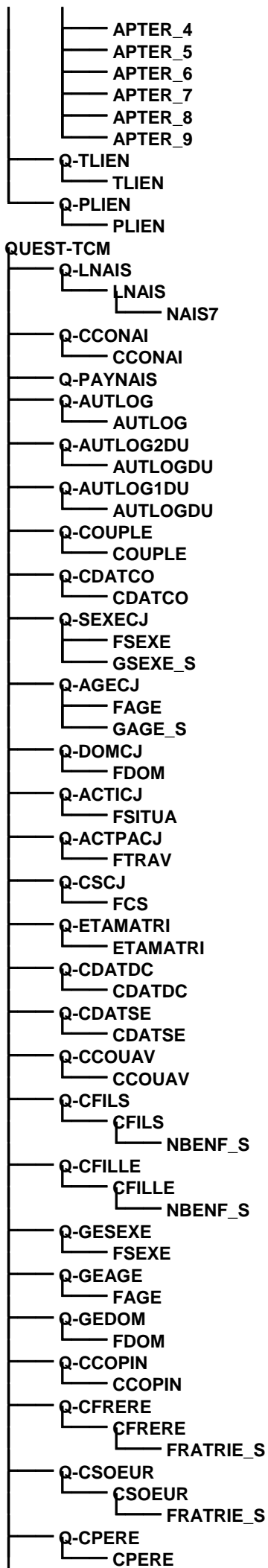
- Q-DISEQUIPD
DISEQUIPD
- Q-DISEQUIPE
DISEQUIPE
- Q-DISEQUIPF
DISEQUIPF
- Q-DISEQUIPG
DISEQUIPG
- Q-DISEQUIPH
DISEQUIPH
- Q-DISEQUIPI
DISEQUIPI
- Q-DISEQUIPJ
DISEQUIPJ
- Q-TYPVOIS
TYPVOIS
- Q-ACTIVITES
 - ACTIVITES_1
 - ACTIVITES_2
 - ACTIVITES_3
 - ACTIVITES_4
 - ACTIVITES_6
 - ACTIVITES_12
 - ACTIVITES_20

QUEST-SELECTION-LISTE-INDIVIDUS

- Q-LISTIND
LISTIND
- Q-TIRAGE
TIRAGE
- Q-RAISREF
RAISREF
- Q-LITREELS
LITREELS
- Q-NBENTR
NBENTR
- Q-EFFENQ
EFFENQ
- Q-QUESTCADR
QUESTCADR
- Q-NOM
- Q-PRENOM
- Q-SEXE
SEXE
- Q-DATNAIS
DATENAI
- Q-TUTEUR
TUTEUR
- Q-DEFAPTE
DEFAPTE
- Q-NBVISET
NBVISET

QUEST-PARTIE2-INDIVIDU

- QUEST-FA-INDIVIDUS
 - Q-POURSUIT
POURSUIT
 - Q-MOUV
MOUV
 - Q-AUTOTUT
AUTOTUT
 - Q-AUTOPAR
AUTOPAR
 - Q-ACCEPT
ACCEPT
 - Q-APTE
APTE
 - Q-APTER
 - APTER_0
BTOI_S
 - APTER_1
 - APTER_2
 - APTER_3



Q-AGEPER
FAGE
GAGE_S

Q-DOMPER
FDM

Q-ACTIPER
FSITUA

Q-ACTPAPER
FTRAV

Q-CSPER
FCS

Q-CMERE
CMERE

Q-AGEMER
FAGE
GAGE_S

Q-DOMMER
FDM

Q-ACTIMER
FSITUA

Q-ACTPAMER
FTRAV

Q-CSMER
FCS

Q-SITUA
SITUA
ACTIF
ACTOCCUP
TRAVAIL

Q-TRAVAIL
TRAVAIL

Q-ACTIVANTE
ACTIVANTE

Q-RECHEMPOI
RECHEMPOI

Q-STATUT
STATUT

Q-PROFESSION

Q-TYPEMPOI

Q-CLASSIF
CLASSIF

Q-FONCTION
FONCTION

Q-SALARIES
SALARIES

Q-ACTIVCOD
ACTIVCOD

Q-ACTIVLIB
ACTIVLIB

Q-SUPH

Q-SUPA

Q-OPA

Q-STATUTANTE
STATUTANTE

Q-PROFESSANTE

Q-CLASSIFANTE
CLASSIFANTE

Q-STATUTCD

Q-PROFESSCD

Q-CLASSIFCD
CLASSIFCD

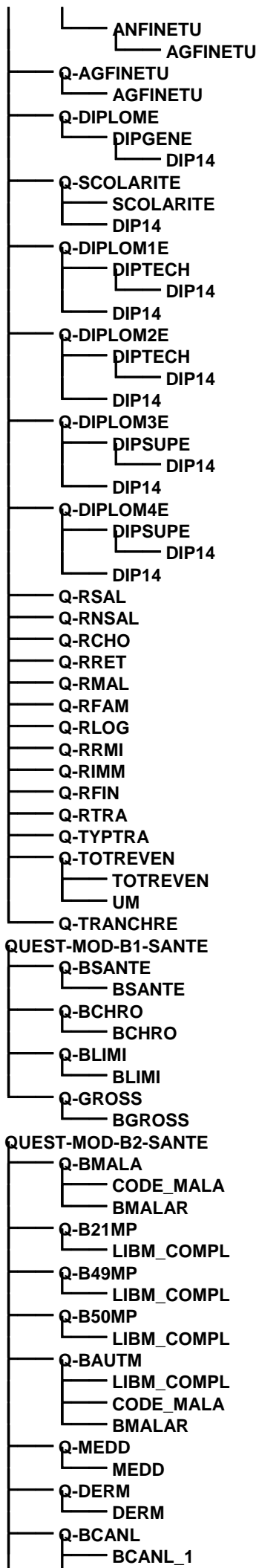
Q-NATIO1N
INATIO

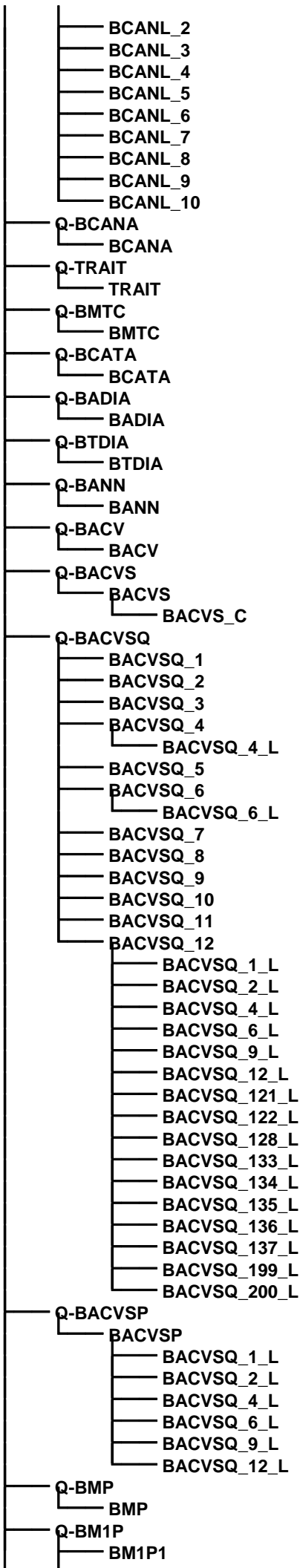
Q-NATIO2N
NATIO2N
INATIO

Q-ETUDES
ETUDES

Q-FORMINIT
FORMINIT

Q-ANFINETU



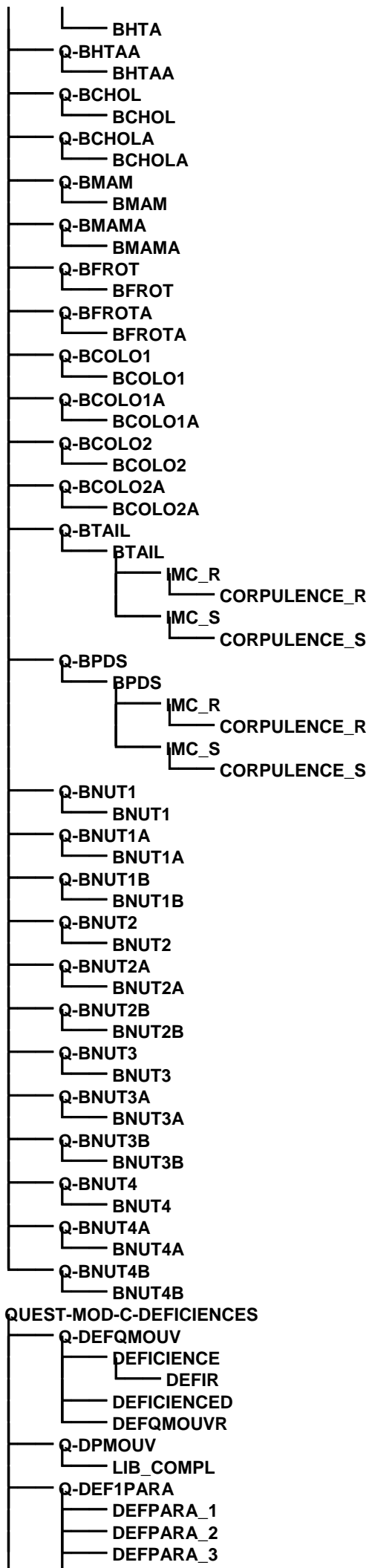


- BM1P2
- Q-BSYMP1T
 - BSYMP1T
- Q-BSYMP2T
 - BSYMP2T
- Q-BSYMP3T
 - BSYMP3T
- Q-BSYMP4T
 - BSYMP4T
- Q-BSYMP5T
 - BSYMP5T
- Q-BSYMP6T
 - BSYMP6T
- Q-BSYMP7T
 - BSYMP7T
- Q-BSYMP8T
 - BSYMP8T
- Q-BSYMP9T
 - BSYMP9T
- Q-BSYMP10T
 - BSYMP10T
- Q-BSYMPQTQ
 - BSYMPQTQ

QUEST-MOD-B3-SANTE

- Q-BSBD1
 - BSBD1
- Q-BSBD2
 - BSBD2
- Q-BSBD3
 - BSBD3_1
 - BSBD3_2
 - BSBD3_3
 - BSBD3_4
- Q-BAVC1
 - BAVC1
- Q-BAVC2
 - BAVC2
- Q-BAVC3
 - BAVC3
- Q-BAVC4A
 - BAVC4A
- Q-BAVC4AP
 - BAVC4AP
 - BAVC4AP_PRODUIITS_L
 - BAVC4AP_ACTIVITE_L
- Q-BAVC4B
 - BAVC4B
- Q-BAVC4BP
 - BAVC4BP
 - BAVC4BP_L
 - BAVC4BP1_L
- Q-BAVC4BA
 - BAVC4BA
- Q-BAVC4C
 - BAVC4C
- Q-BAVC5
 - BAVC5_1
 - BAVC5_2
 - BAVC5_3
 - BAVC5_4
 - BAVC5_5
 - BAVC5_6
 - BAVC5_7
- Q-BAVC6
 - BAVC6
- Q-BGEN
 - BGEN
- Q-BGENNB
 - BGENNB
- Q-BSPE
 - BSPE

Q-BSPETYP
BSPETYP_1
BSPETYP_2
BSPETYP_3
BSPETYP_4
BSPETYP_5
BSPETYP_6
BSPETYP_7
BSPETYP_8
BSPETYP_9
BSPETYP_10
BSPETYP_11
Q-BSPETYP1A
BSPETYP1A
Q-BSPETYP1AUT
Q-BSPETYP2A
BSPETYP2A
Q-BSPETYP2AUT
Q-BSPETYP3A
BSPETYP3A
Q-BHOP
BHOP
Q-BCONS0
BCONS0
Q-BCONS1
BCONS1
Q-BCONS2
BCONS2
Q-BCONS3
BCONS3
Q-BCONS4
BCONS4
Q-BCONS5
BCONS5
Q-BCONS7
BCONS7
Q-BCONS8
BCONS8
Q-BCONS9
BCONS9
Q-BCONS10
BCONS10
Q-BCONS11
BCONS11
Q-BCONS12
BCONS12
Q-BCONS13
BCONS13
Q-BCONS14
BCONS14
Q-B2REC
B2REC
Q-B2RECA
B2RECA
Q-B2RECB
B2RECB
Q-B2RECC
B2RECC
Q-BVACC1
BVACC1
Q-BVACC2
BVACC2
Q-BVACC3
BVACC3
Q-BVACC4
BVACC4
Q-BVACC4A
BVACC4A
Q-BVACC4B
BVACC4B
Q-BHTA



- DEFPARA_4
- DEFPARA_5
- DEFPARA_6
- DEFPARA_7
- DEFPARA_8
- DEFPARA_9
- DEFPARA_10
- DEFPARA_11
- DEFPARA_12
- DEFPARA_13
- DEFPARA_14

Q-DEF2PARA

- DEFPARA_1
- DEFPARA_2
- DEFPARA_3
- DEFPARA_4
- DEFPARA_5
- DEFPARA_6
- DEFPARA_7
- DEFPARA_8
- DEFPARA_9
- DEFPARA_10
- DEFPARA_11
- DEFPARA_12
- DEFPARA_13
- DEFPARA_14

Q-DEF5PARA

- DEFPARA_1
- DEFPARA_2
- DEFPARA_3
- DEFPARA_4
- DEFPARA_5
- DEFPARA_6
- DEFPARA_7
- DEFPARA_8
- DEFPARA_9
- DEFPARA_10
- DEFPARA_11
- DEFPARA_12
- DEFPARA_13
- DEFPARA_14
- DEFPARA_15

Q-DEFAMPUT

- DEFAMPUT_1
- DEFAMPUT_2
- DEFAMPUT_3
- DEFAMPUT_4
- DEFAMPUT_5
- DEFAMPUT_6
- DEFAMPUT_7
- DEFAMPUT_8
- DEFAMPUT_9
- DEFAMPUT_10
- DEFAMPUT_11
- DEFAMPUT_12
- DEFAMPUT_13
- DEFAMPUT_14
- DEFAMPUT_15
- DEFAMPUT_16
- DEFAMPUT_17
- DEFAMPUT_18
- DEFAMPUT_19
- DEFAMPUT_20
- DEFAMPUT_21

Q-DEFARTI

- DEFARTI_1
- DEFARTI_2
- DEFARTI_3
- DEFARTI_4
- DEFARTI_5
- DEFARTI_6

- DEFARTI_7
- DEFARTI_8
- DEFARTI_9
- DEFARTI_10
- DEFARTI_11
- DEFARTI_12
- DEFARTI_13
- DEFARTI_14
- DEFARTI_15
- DEFARTI_16
- DEFARTI_17
- DEFARTI_18
- Q-DEFINCONT
 - DEFINCONT_1
 - DEFINCONT_2
 - DEFINCONT_3
- Q-D1PROBM
 - D1PROB
- Q-D2PROBM
 - D2PROB
- Q-DAPROBM
 - DAPROB
- Q-DEFMOT
 - DEFGRO
- Q-DEFMAC
 - DEFAC
- Q-DEFMACL
 - DEFACL
- Q-DEFMNAT
 - DEFNAT
- Q-DEFMMA
 - DEFMA
- Q-DEFMMAC
 - DEFMAC
- Q-DEFMMAN
 - DEFMAN01
 - DEFMAN02
 - DEFMAN03
 - DEFMAN04
- Q-DMACTI
 - DACTI
- Q-DMACTIP
 - DACTIP
- Q-DMACTIA
 - DACTIA
- Q-DMCVIE
 - DCVIE
- Q-DMCVIEP
 - DCVIEP
- Q-DMCVIEA
 - DCVIEA
- Q-DEFMAUT
 - DEFMAUT
- Q-DEFMP
 - DEFMP
- Q-B1VUE
 - B1VUE
- Q-DEFVISU
 - DEFVISU
 - DEFQVISUR
- Q-DEFQVISU
 - DEFICIENCE
 - DEFIR
 - DEFQVISUR
- Q-DPVISU
 - LIB_COMPL
- Q-D1PROBV
 - D1PROB
- Q-D2PROBV
 - D2PROB
- Q-DAPROBV

DAPROB
Q-DEFVUE
DEFGRO
Q-DEFVAC
DEFAC
Q-DEFVACL
DEFACL
Q-DEFVNAT
DEFNAT
Q-DEFVMA
DEFMA
Q-DEFVMAC
DEFMAC
Q-DEFVMAN
DEFMAN01
DEFMAN02
DEFMAN03
DEFMAN04
Q-DEFVAUT
DEFAULT
Q-DEFVP
DEFP
Q-B1OUI
B1OUI
DEFAUDI
Q-B1OUIB
B1OUIB
Q-TYPAUD
TYPAUD
Q-DEFAUDI
DEFAUDI
DEFQAUDIR
Q-DEFQAUDI
DEFICIENCE
DEFIR
DEFQAUDIR
Q-DPAUDI
LIB_COMPL
Q-D1PROBA
D1PROB
Q-D2PROBA
D2PROB
Q-DAPROBA
DAPROB
Q-DEFAUD
DEFGRO
Q-DEFAAC
DEFAC
Q-DEFAACL
DEFACL
Q-DEFANAT
DEFNAT
Q-DEFAMA
DEFMA
Q-DEFAMAC
DEFMAC
Q-DEFAAN
DEFMAN01
DEFMAN02
DEFMAN03
DEFMAN04
Q-DEFAAUT
DEFAULT
Q-DEFAP
DEFP
Q-DEFPAROL
DEFPAROL
DEFQPAROLR
Q-DEFQPAROL
DEFICIENCE
DEFIR

- DEFQPAROLR
- Q-DEFPPAROL
 - LIB_COMPL
- Q-D1PROBP
 - D1PROB
- Q-D2PROBP
 - D2PROB
- Q-DAPROBP
 - DAPROB
- Q-DEFPARO
 - DEFGRO
- Q-DEFPAC
 - DEFAC
- Q-DEFPACL
 - DEFACL
- Q-DEFPNAT
 - DEFNAT
- Q-DEFPMA
 - DEFMA
- Q-DEFPMAC
 - DEFMAC
- Q-DEFPMAN
 - DEFMAN01
 - DEFMAN02
 - DEFMAN03
 - DEFMAN04
- Q-DEFPAUT
 - DEFAULT
- Q-DEFPP
 - DEFP
- Q-DEFPSY
 - DEFICIENCE
 - DEFIR
 - DEFPSYR
- Q-DEFPSY1P
 - LIB_COMPL
- Q-DEFPSY2P
 - LIB_COMPL
- Q-DEFPSY3P
 - LIB_COMPL
- Q-D1PROBPSY
 - D1PROB
- Q-D2PROBPSY
 - D2PROB
- Q-DAPROBPSY
 - DAPROB
- Q-DEFOPSY
 - DEFGRO
- Q-DEFPSYAC
 - DEFAC
- Q-DEFPSYACL
 - DEFACL
- Q-DEFPSYNAT
 - DEFNAT
- Q-DEFPSYMA
 - DEFMA
- Q-DEFPSYMAC
 - DEFMAC
- Q-DEFPSYMAN
 - DEFMAN01
 - DEFMAN02
 - DEFMAN03
 - DEFMAN04
- Q-DPSYACTI
 - DACTI
- Q-DPSYACTIP
 - DACTIP
- Q-DPSYACTIA
 - DACTIA
- Q-DPSYCVIE
 - DCVIE

Q-DPSYCVIEP
DCVIEP

Q-DPSYCVIEA
DCVIEA

Q-DEFPSYAUT
DEFAULT

Q-DEFPSYP
DEFP

Q-DEFAUTRE
DEFAUTRE

Q-DEFAULT1
LIB_COMPL

Q-DEFAULT2
LIB_COMPL

Q-DEFAULT3
LIB_COMPL

QUEST-MOD-D-AIDES-TECHNIQUES

Q-DPROTU

DPROTU_1
DPROTU_2
DPROTU_3
DPROTU_4
DPROTU_5
DPROTU_6
DPROTU_7
DPROTU_8
DPROTU_9
DPROTU_10
DPROTU_11
DPROTU_12
DPROTU_13
DPROTU_14
DPROTU_15
DPROTU_16
DPROTU_17
DPROTU_18
DPROTU_19
DPROTU_20
DPROTU_21
DPROTU_22
DPROTU_23
DPROTU_24
DPROTU_25
DPROTU_26
DPROTU_27
DPROTU_28
DPROTU_29
DPROTU_30
DPROTU_31
DPROTU_32
DPROTU_33
DPROTU_34

Q-DPROTB

DPROTB_1
DPROTB_2
DPROTB_3
DPROTB_4
DPROTB_5
DPROTB_6
DPROTB_7
DPROTB_8
DPROTB_9
DPROTB_10
DPROTB_11
DPROTB_12
DPROTB_13
DPROTB_14
DPROTB_15
DPROTB_16
DPROTB_17
DPROTB_18

— DPROTB_19
— DPROTB_20
— DPROTB_21
— DPROTB_22
— DPROTB_23
— DPROTB_24
— DPROTB_25
— DPROTB_26
— DPROTB_27
— DPROTB_28
— DPROTB_29
— DPROTB_30
— DPROTB_31
— DPROTB_32
— DPROTB_33
— DPROTB_34

— Q-DOPTIQ
— DOPTIQ

— Q-DOPTIQB
— DOPTIQB

— Q-DORDIN
— DORDIN

— Q-DORDINB
— DORDINB

— Q-DAPBRA
— DAPBRA

— Q-DLIBRA
— DLIBRA

— Q-DECRTA
— DECRTA

— Q-DECRTAB
— DECRTAB

— Q-DVOIX
— DVOIX

— Q-DVOIXB
— DVOIXB

— Q-DSIGNE
— DSIGNE

— Q-DAUDIO
— DAUDIO

— Q-DAUDIOB
— DAUDIOB

— Q-DOUIE
— DOUIE

— Q-DOUIEB
— DOUIEB

— Q-DECRTB
— DECRTB

— Q-DECRTBB
— DECRTBB

— Q-DMANIP
— DMANIP

— Q-DMANIPB
— DMANIPB

— Q-DDOIGT
— DDOIGT

— Q-DDOIGTB
— DDOIGTB

— Q-DLECTU
— DLECTU

— Q-DLECTUB
— DLECTUB

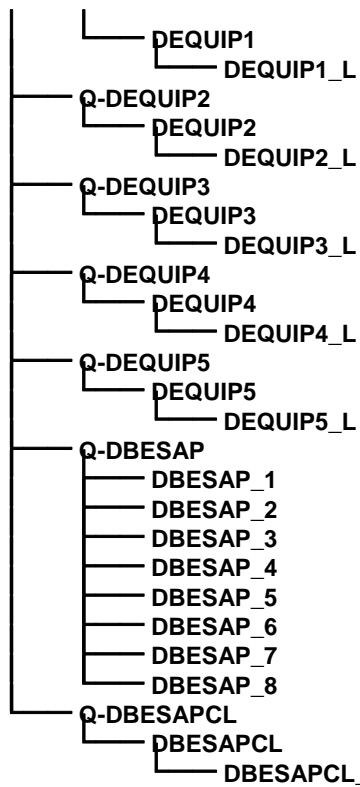
— Q-BALARM
— BALARM

— Q-BALARMB
— BALARMB

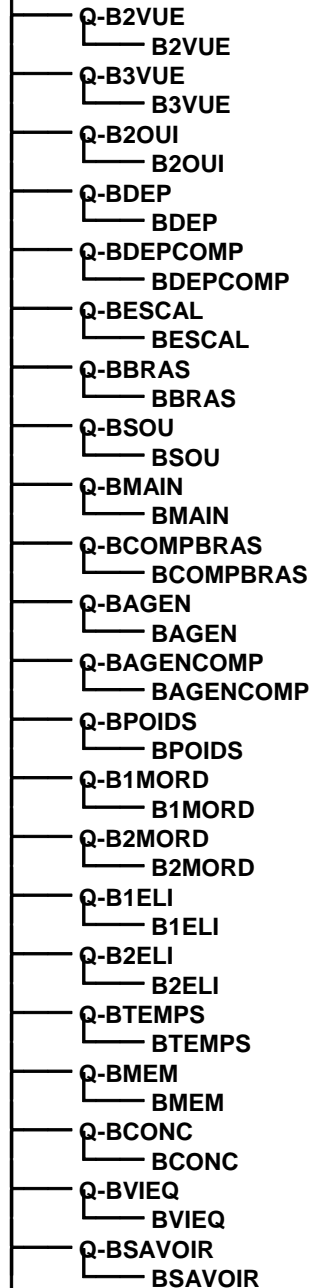
— Q-DAUTEQ
— DAUTEQ

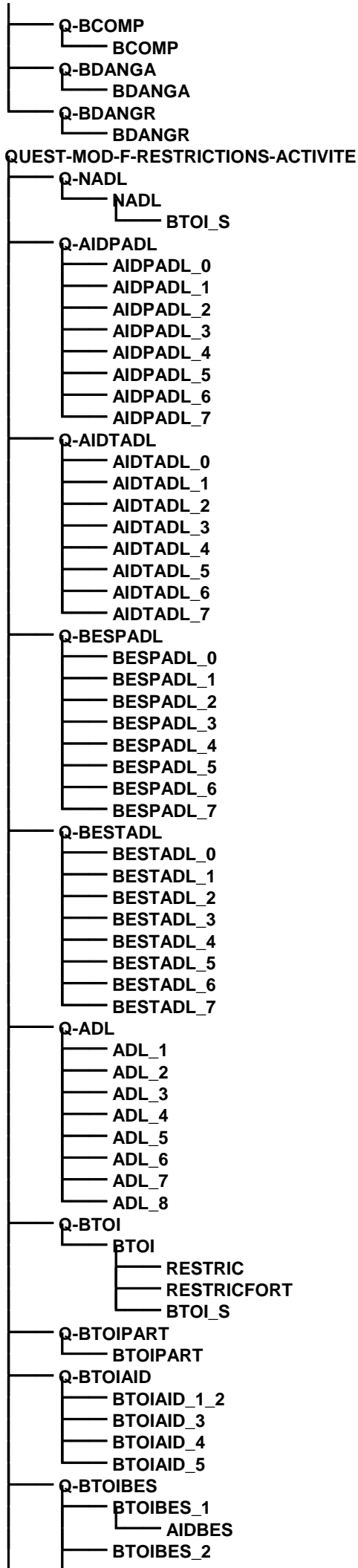
— Q-DAUTEQB
— DAUTEQB

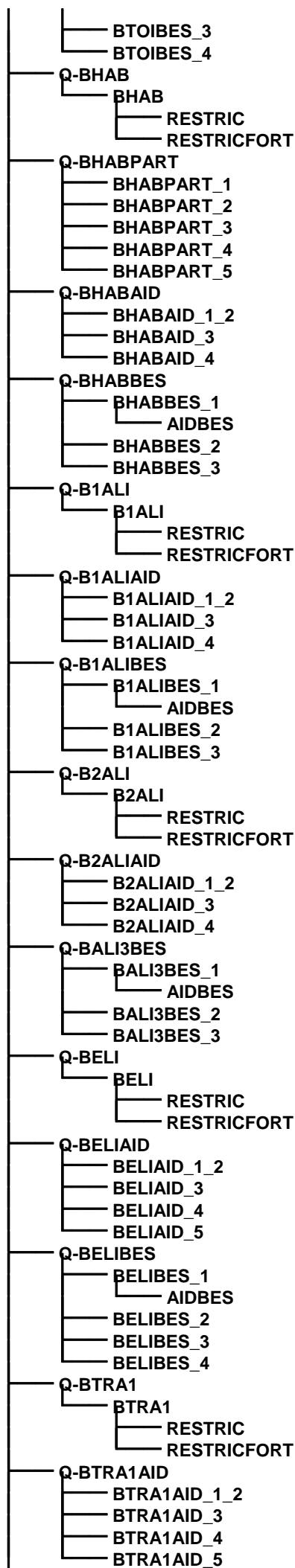
— Q-DEQUIP1



QUEST-MOD-E-LIMITATIONS-FONCTIONNELLES







- Q-BTRA1BES
 - BTRA1BES_1
 - AIDBES
 - BTRA1BES_2
 - BTRA1BES_3
 - BTRA1BES_4
- Q-BTRA2
 - BTRA2
 - RESTRIC
 - RESTRICFORT
- Q-BTRA2AID
 - BTRA2AID_1_2
 - BTRA2AID_3
 - BTRA2AID_4
 - BTRA2AID_5
- Q-BTRA2BES
 - BTRA2BES_1
 - AIDBES
 - BTRA2BES_2
 - BTRA2BES_3
 - BTRA2BES_4
- Q-NIADL
 - NIADL
- Q-AIDPIADL
 - AIDPIADL_0
 - AIDPIADL_1
 - AIDPIADL_2
 - AIDPIADL_3
 - AIDPIADL_4
 - AIDPIADL_5
 - AIDPIADL_6
 - AIDPIADL_7
 - AIDPIADL_8
 - AIDPIADL_9
 - AIDPIADL_10
 - AIDPIADL_11
 - AIDPIADL_12
- Q-AIDTIADL
 - AIDTIADL_0
 - AIDTIADL_1
 - AIDTIADL_2
 - AIDTIADL_3
 - AIDTIADL_4
 - AIDTIADL_5
 - AIDTIADL_6
 - AIDTIADL_7
 - AIDTIADL_8
 - AIDTIADL_9
 - AIDTIADL_10
 - AIDTIADL_11
 - AIDTIADL_12
- Q-BESPIADL
 - BESPIADL_0
 - BESPIADL_1
 - BESPIADL_2
 - BESPIADL_3
 - BESPIADL_4
 - BESPIADL_5
 - BESPIADL_6
 - BESPIADL_7
 - BESPIADL_8
 - BESPIADL_9
 - BESPIADL_10
 - BESPIADL_11
 - BESPIADL_12
- Q-BESTIADL
 - BESTIADL_0
 - BESTIADL_1
 - BESTIADL_2
 - BESTIADL_3
 - BESTIADL_4

- BESTIADL_5
- BESTIADL_6
- BESTIADL_7
- BESTIADL_8
- BESTIADL_9
- BESTIADL_10
- BESTIADL_11
- BESTIADL_12

Q-IADL

- IADL_1
- IADL_2
- IADL_3
- IADL_4
- IADL_5
- IADL_6
- IADL_7
- IADL_8
- IADL_9
- IADL_10
- IADL_11
- IADL_12
- IADL_13

Q-BACHA

- BACHA
 - RESTRIC
 - RESTRICFORT

Q-BACHACF

- BACHACF

Q-BACHAAID

- BACHAAID_1_2
- BACHAAID_3
- BACHAAID_4

Q-BACHABES

- BACHABES_1
 - AIDBES
- BACHABES_2
- BACHABES_3

Q-BREP

- BREP
 - RESTRIC
 - RESTRICFORT

Q-BREPCF

- BREPCF

Q-BREPAID

- BREPAID_1_2
- BREPAID_3
- BREPAID_4
- BREPAID_5

Q-BREPBES

- BREPBES_1
 - AIDBES
- BREPBES_2
- BREPBES_3
- BREPBES_4

Q-BMEN1

- BMEN1
 - RESTRIC
 - RESTRICFORT

Q-BMEN1CF

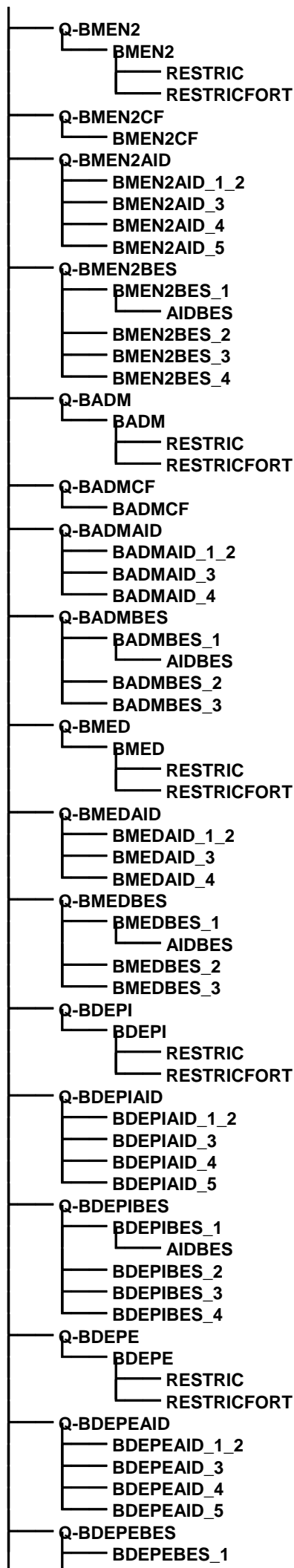
- BMEN1CF

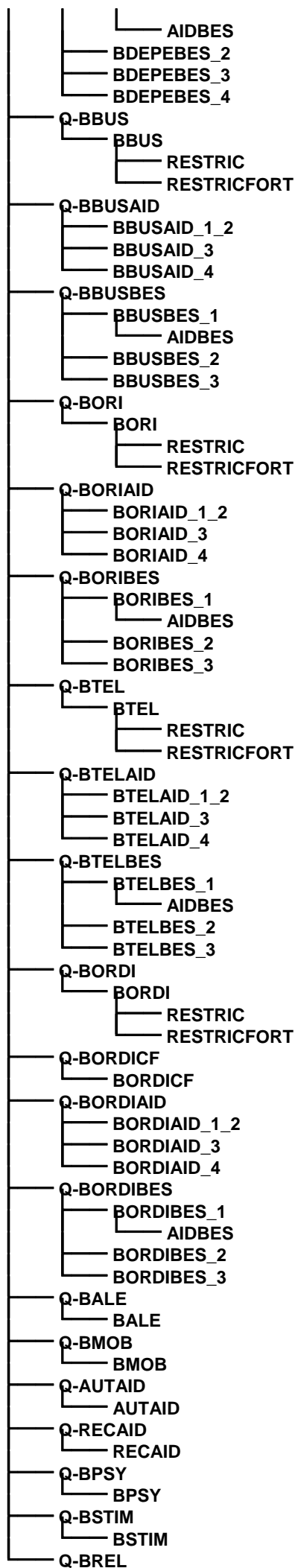
Q-BMEN1AID

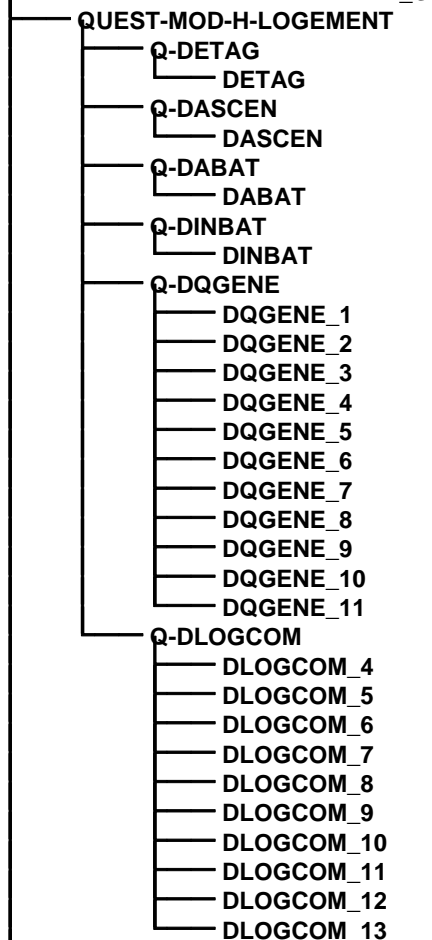
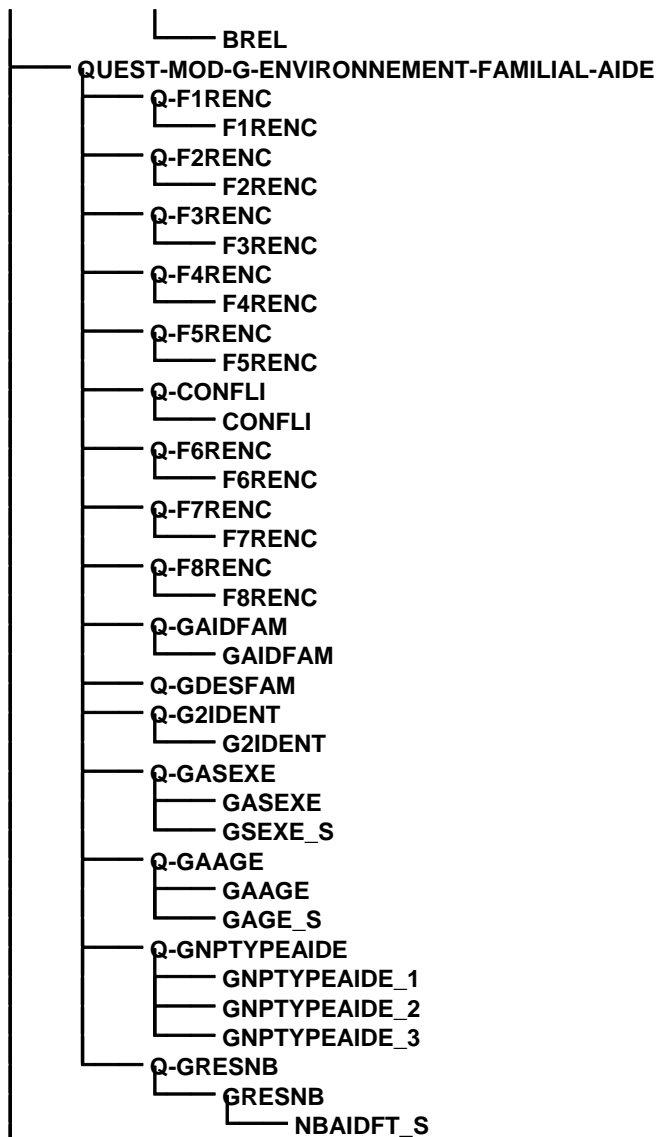
- BMEN1AID_1_2
- BMEN1AID_3
- BMEN1AID_4
- BMEN1AID_5

Q-BMEN1BES

- BMEN1BES_1
 - AIDBES
- BMEN1BES_2
- BMEN1BES_3
- BMEN1BES_4







QUEST-MOD-I-ACCESSIBILITE

Q-TDHDOM
TDHDOM

Q-TRNODEP
TRNODEP_1
TRNODEP_3
TRNODEP_4
TRNODEP_5
TRNODEP_6
TRNODEP_7
TRNODEP_8
TRNODEP_9
TRNODEP_10

Q-TENVSOR
TENVSOR

Q-TSSOUV
TSSOUV
TSOU
TSHOR

Q-TMTRANS
TMTRANS_1
TMTRANS_2
TMTRANS_3
TMTRANS_4
TMTRANS_5
TMTRANS_6
TMTRANS_7
TMTRANS_8
TMTRANS_9
TMTRANS_10
TMTRANS_11
TMTRANS_12

Q-TDGENE
TDGENE_1
TDGENE_2
TDGENE_3
TDGENE_4
TDGENE_5
TDGENE_6
TDGENE_7
TDGENE_8

Q-TCOND
TCOND

Q-TPCOND
TPCOND_1
TPCOND_2
TPCOND_3
TPCOND_4
TPCOND_5
TPCOND_6
TPCOND_7
TPCOND_8

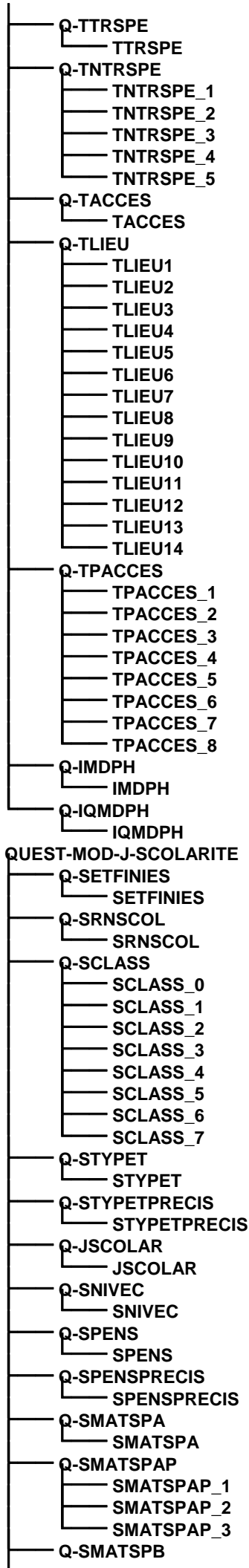
Q-TVAM
TVAM_1
TVAM_2
TVAM_3
TVAM_4
TVAM_5
TVAM_6
TVAM_7

Q-TVOTYP
TVOTYP

Q-TADAPT
TADAPT

Q-TDTRAN
TDTRAN

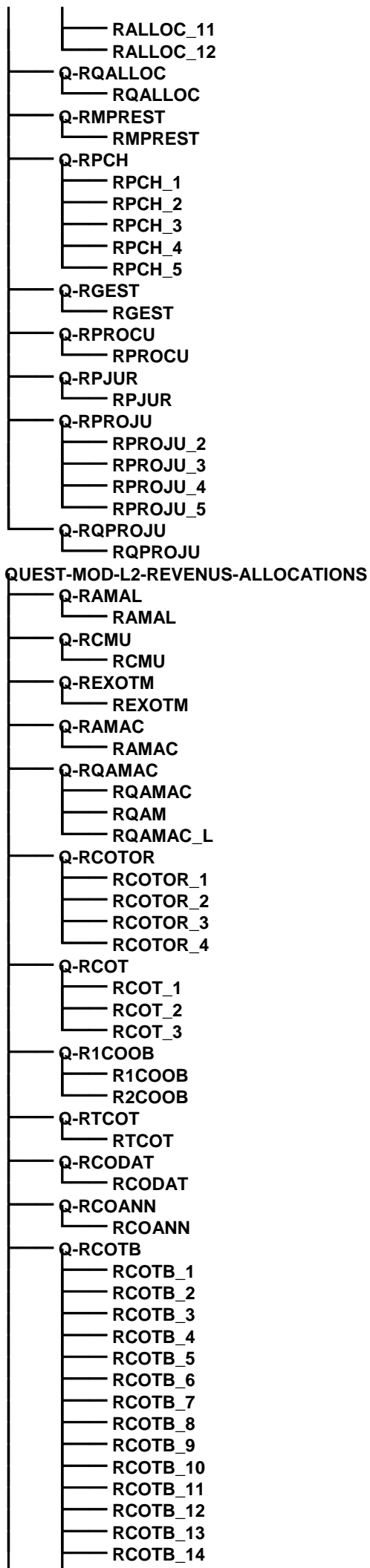
Q-TQDIFF
TQDIFF_1
TQDIFF_2
TQDIFF_3
TQDIFF_4
TQDIFF_5



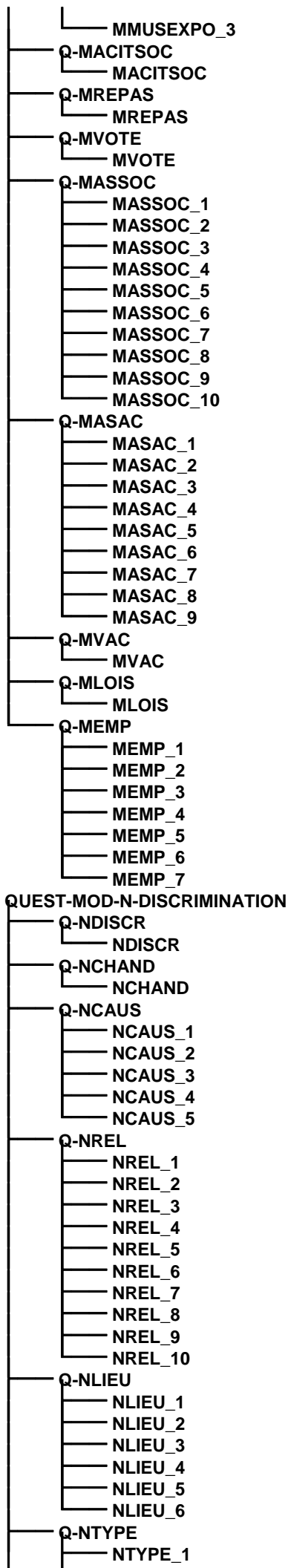
- SMATSPB
- Q-STRFIN
 - STRFIN
- Q-STRSPE
 - STRSPE
- Q-SINTER
 - SINTER
- Q-SPERTU
 - SPERTU
- Q-SLIRE
 - SLIRE
- Q-SECRIR
 - SECRIR
- Q-SCOMPT
 - SCOMPT
- QUEST-MOD-K-EMPLOI
 - Q-ECINAC
 - ECINAC
 - Q-ESOUHA
 - ESOUHA
 - Q-EACCTRA
 - EACCTRA
 - Q-EAVFIN
 - EAVFIN
 - Q-ERESFAM
 - ERESFAM
 - Q-EDEC
 - EDEC
 - Q-EHIMP
 - EHIMP
 - Q-EMPLAD
 - EMPLAD
 - Q-EATEMP
 - EATEMP
 - Q-EATTAUX
 - EATTAUX
 - Q-EATTHER
 - EATTHER
 - Q-EATRAIS
 - EATRAIS
 - Q-EATROU
 - EATROU_1
 - EATROU_2
 - EATROU_3
 - EATROU_4
 - EATROU_5
 - EATROU_6
 - EATROU_7
 - EATROU_8
 - EATROU_9
 - EATROU_10
 - EATROU_11
 - EATROU_12
 - EATROU_13
 - EATROU_14
 - EATROU_15
 - Q-EABS
 - EABS
 - Q-ENBJ
 - ENBJ
 - Q-EACAUS
 - EACAUS
 - Q-EACHENT
 - EACHENT
 - Q-EACHPRO
 - EACHPRO
 - Q-EALIMIN
 - EALIMIN
 - Q-EASITUA
 - EASITUA
 - Q-EAFINA

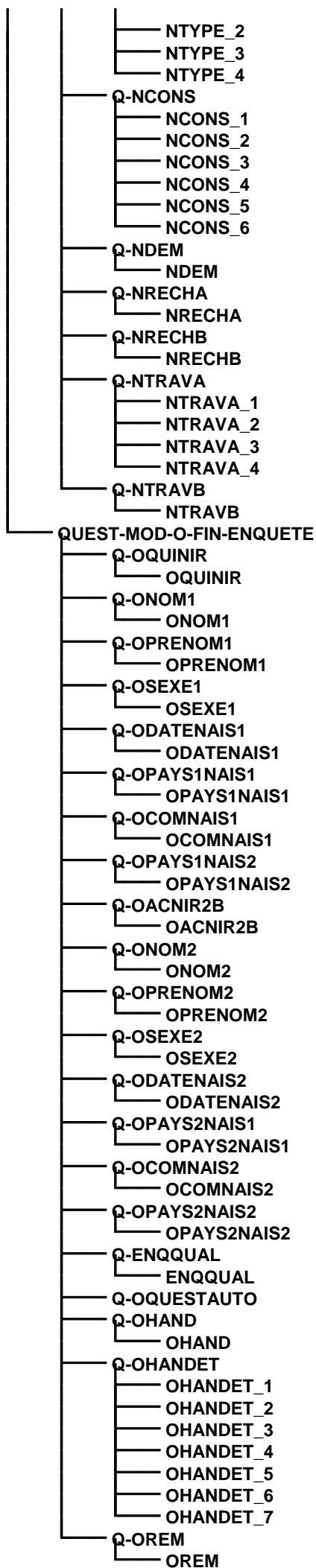
EAFINA
Q-EAIDEEMP
EAIDEEMP_1
EAIDEEMP_2
EAIDEEMP_3
EAIDEEMP_4
EAIDEEMP_5
EAIDEEMP_6
Q-EAQUI
EAQUI
Q-EAMEN
EAMEN
Q-EAMENA
EAMENA
Q-EAMENB
EAMENB
Q-EAMENC
EAMENC
Q-EAMEND
EAMEND
Q-EAMENE
EAMENE
Q-EAMENF
EAMENF
Q-EAMENG
EAMENG
Q-EAMENH
EAMENH
Q-EAMENI
EAMENI
Q-EAMENJ
EAMENJ
Q-EAMENK
EAMENK
Q-EACTIV
EACTIV
Q-EACTIVLIB
EACTIVLIB
Q-EANBSAL
EANBSAL
Q-EASTAG
EASTAG
Q-DEBSITUN
DEBSITUN
Q-FINCHO
FINCHO_1
FINCHO_2
FINCHO_3
FINCHO_4
FINCHO_5
FINCHO_6
FINCHO_7
Q-EBCIRC
EBCIRC
Q-EBPER
EBPER_1
EBPER_2
EBPER_3
EBPER_4
Q-EBRES
EBRES_1
EBRES_2
EBRES_3
EBRES_4
Q-EBACCI
EBACCI
Q-EBTEMP
EBTEMP
Q-EBDEMA
EBDEMA
Q-EBLIMIN

	EBLIMIN
Q-EBSITUA	EBSITUA
Q-EBAMEN	EBAMEN
Q-EBAMENA	EBAMENA
Q-EBAMENB	EBAMENB
Q-EBAMENC	EBAMENC
Q-EBAMEND	EBAMEND
Q-EBAMENE	EBAMENE
Q-EBAMENF	EBAMENF
Q-EBAMENG	EBAMENG
Q-EBAMENH	EBAMENH
Q-EBAMENI	EBAMENI
Q-EBSTAG	EBSTAG
Q-DEBSITUNB	DEBSITUNB
Q-FINCHOB	FINCHOB_1
	FINCHOB_2
	FINCHOB_3
	FINCHOB_4
	FINCHOB_5
	FINCHOB_6
	FINCHOB_7
Q-ECCAUS	ECCAUS
Q-ECCHENT	ECCHENT
Q-ECCHPRO	ECCHPRO
Q-ECDATE	ECDATE
Q-ECDURE	ECDURE
Q-ECCIRC	ECCIRC
Q-ECPER	ECPER_1
	ECPER_2
	ECPER_3
	ECPER_4
Q-ECRES	ECRES_1
	ECRES_2
	ECRES_3
	ECRES_4
Q-ECACCI	ECACCI
QUEST-MOD-L1-REVENUS-ALLOCATIONS	
Q-RALLOC	RALLOC_1
	RALLOC_2
	RALLOC_3
	RALLOC_4
	RALLOC_5
	RALLOC_6
	RALLOC_7
	RALLOC_8
	RALLOC_9
	RALLOC_10



- RCOTB_15
- Q-RTRAV
 - RTRAV
- Q-RDEMARCH
 - RDEMARCH
- Q-RCORES
 - RCORES
- Q-R1COATT
 - R1COATT
 - R2COATT
- Q-RCDTYP
 - RCDTYP
- Q-RCDRES
 - RCDRES
- Q-R3COATT
 - R3COATT
 - R4COATT
- Q-RQADRE
 - RQADRE
- Q-RCARTE
 - RCARTE
- Q-RTYPE
 - RTYPE_1
 - RTYPE_2
 - RTYPE_3
 - RTYPE_4
 - RTYPE_5
- Q-RTHEMP
 - RTHEMP
- QUEST-MOD-M-LOISIRS
 - Q-MSPORT
 - MSPORT
 - Q-MSPORTFREQ
 - MSPORTFREQ
 - Q-MBRIJAR
 - MBRIJAR
 - Q-MBRIJARFREQ
 - MBRIJARFREQ
 - Q-MBRODCOUT
 - MBRODCOUT
 - Q-MBRODCOUTFREQ
 - MBRODCOUTFREQ
 - Q-MARTIS
 - MARTIS
 - Q-MARTISFREQ
 - MARTISFREQ
 - Q-MTELE
 - MTELE
 - Q-MTELEFREQ
 - MTELEFREQ
 - Q-MDISQUE
 - MDISQUE
 - Q-MDISQUEFREQ
 - MDISQUEFREQ
 - Q-MLECT
 - MLECT
 - Q-MLECTFREQ
 - MLECTFREQ
 - Q-MCINE
 - MCINE_1
 - MCINE_2
 - MCINE_3
 - Q-MCINEFREQ
 - MCINEFREQ
 - Q-MCONC
 - MCONC_1
 - MCONC_2
 - MCONC_3
 - Q-MMUSEXPO
 - MMUSEXPO_1
 - MMUSEXPO_2





QUEST-PARTIE3-DONNEES-DE-CADRAGE

Q-CADRIND

CADRIND

Q-DATEARR

DATEARR

Q-LOGAV

LOGAV

Q-DATECOLL

DATECOLL

Q-LIEUDOM1

LIEUDOM1

Q-LIEUDOM2

LIEUDOM2

Q-LIEUDOM3

LIEUDOM7

Q-RGIR

RGIR

Q-TAPA

TAPA

Q-TAPAETB

TAPAETB

Q-RAPA

RAPA

Q-RAPADEC

RAPADEC

Q-INVAL

INVAL

Q-INVAL1

INVAL1

Q-INVAL2

INVAL2

Q-INVAL3

INVAL3

Q-INVAL4

INVAL4

Q-INVAL5

INVAL5

Q-RTAUX

RTAUX1

RTAUX2

RTAUX3

RTAUX4

RTAUX5

Q-RTAUXBAS

RTAUXBAS1

RTAUXBAS2

RTAUXBAS3

RTAUXBAS4

RTAUXBAS5

Q-RTAUXHAUT

RTAUXHAUT1

RTAUXHAUT2

RTAUXHAUT3

RTAUXHAUT4

RTAUXHAUT5

Q-RDATE

RDATE1

RDATE2

RDATE3

RDATE4

RDATE5

Q-M1

M1

M1A

Q-M2

M2A

M2B

M2C

M2D

M2E

M2F

